

LANGSTONE COURT

DRAYTON LANE | DRAYTON | PO6 1BU



£225,000
LEASEHOLD

- One Bedroom Apartment
- No Forward Chain
- Living Room/Dining Area with Balcony
- Superb Range of Communal Facilities
- Close to Local Amenities and Bus Stops
- Communal Grounds and Parking
- Offered In Good Decorative Order
- Approximate Internal Area = 566 Sq Ft



In Brief

This spacious second floor, one bedroom apartment is located within 'Sovereign House, Langstone Court and is offered with no forward chain. The accommodation is in good decorative order and comprises; spacious reception hallway, double bedroom, living/dining area with doors opening to a southerly facing balcony with stunning views, fitted kitchen and a shower room.

This prestigious development is situated in Central Drayton close to local shops and on bus routes to supermarkets and other town centres. This gated community has no equal in the Drayton area and boasts superb communal facilities. Both blocks have well appointed communal lounges, buggy stores and laundry rooms. 'Victory House' has the addition of the Guest Suite (bedroom, kitchen and shower room), hairdressing salon, activity room, family room (with dvd and television facilities) plus, of course, the magnificent Raffles Lounge (to the top floor) with its own catering facilities, comfortable seating and the south facing sun terrace with extensive views of The Solent and Portsmouth. This area can be hired, at a reasonable rate, for family functions, if required, and host other events as well. Outside the block are some attractive communal gardens, water feature, and communal parking behind the electrically controlled gates.

£225,000

KEY FACTS

TENURE : Leasehold

LEASE LENGTH : 111 Years Remaining on Lease

GROUND RENT : £463.94 per annum

MAINTENANCE : £2,251.58 per annum

COUNCIL TAX BAND : 'C'

EPC RATING : To be Advised



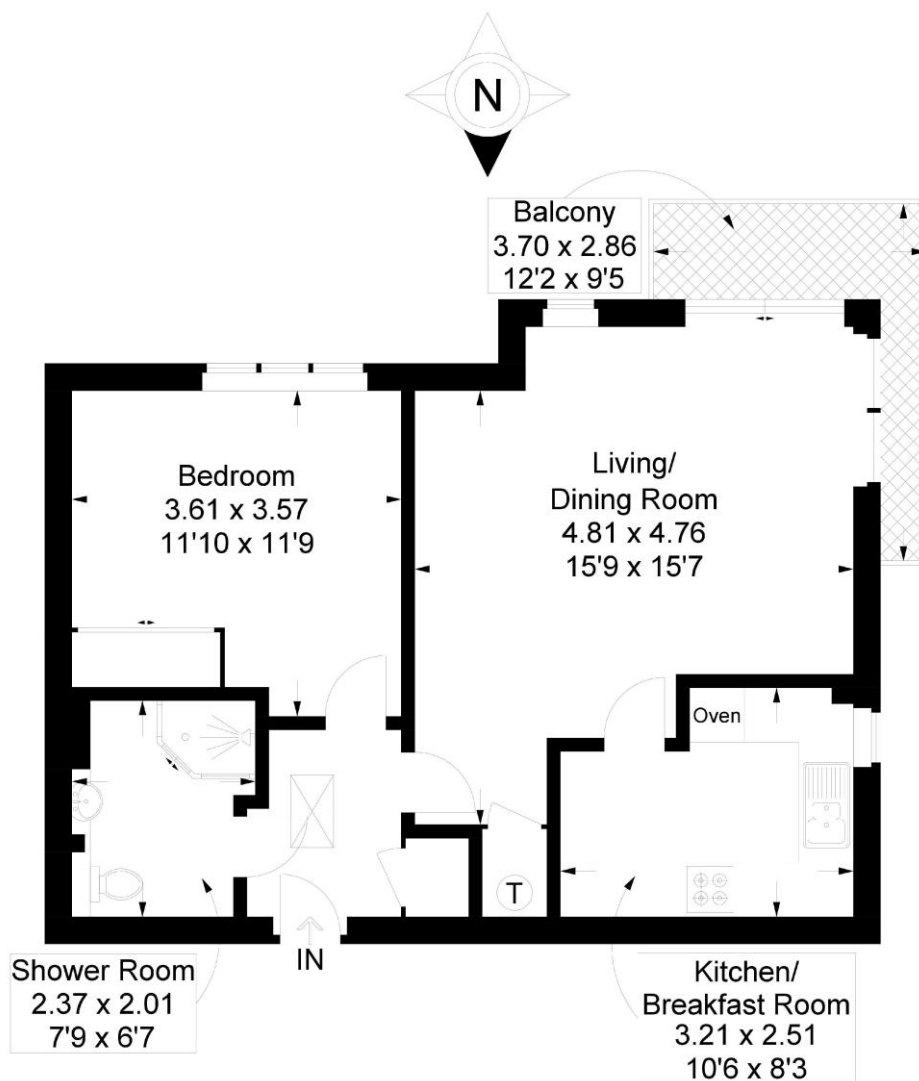
LANGSTONE COURT

DRAYTON LANE | DRAYTON | PO6 1BU



Langstone Court, Drayton Lane, Drayton

Approximate Gross Internal Area = 52.6 sq m / 566 sq ft



Second Floor

This plan is for layout guidance only. Not drawn to scale unless stated. Windows and door openings are approximate. Whilst every care is taken in the preparation of this plan, please check all dimensions, shapes and compass bearings before making any decisions reliant upon them.

Southsea
Sales & Lettings
7/9 Stanley Street,
Southsea, PO5 2DS
Tel: 023 9281 5221

Old Portsmouth & Gunwharf Quays
Sales & Lettings
The Seagull, 13 Broad Street,
Old Portsmouth, PO1 2JD
Tel: 023 9281 5221

Drayton & Out of Town
Sales & Lettings
139 Havant Road,
Drayton, PO6 2AA
Tel: 023 9221 0101

London
Sales & Lettings
Mayfair Office, Cashel House,
15 Thayer Street, W1U 3JT
Tel: 0870 112 7099

Southsea
Admin Centre
12 Marmion Road,
Southsea, PO5 2BA
Tel: 023 9282 2300

www.fryandkent.com